



# MONTHLY MEMBERSHIP PROGRESS REPORT

District 2 E1

Results as of: 1/31/2015

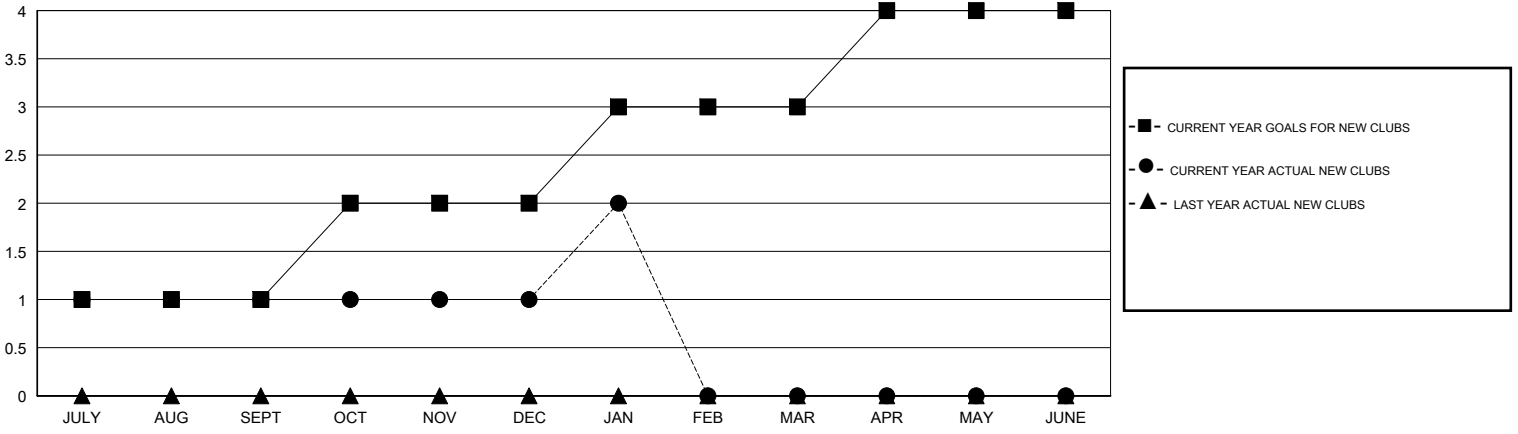
GMT: HAL GRIFFIN

LOCATION TEXAS

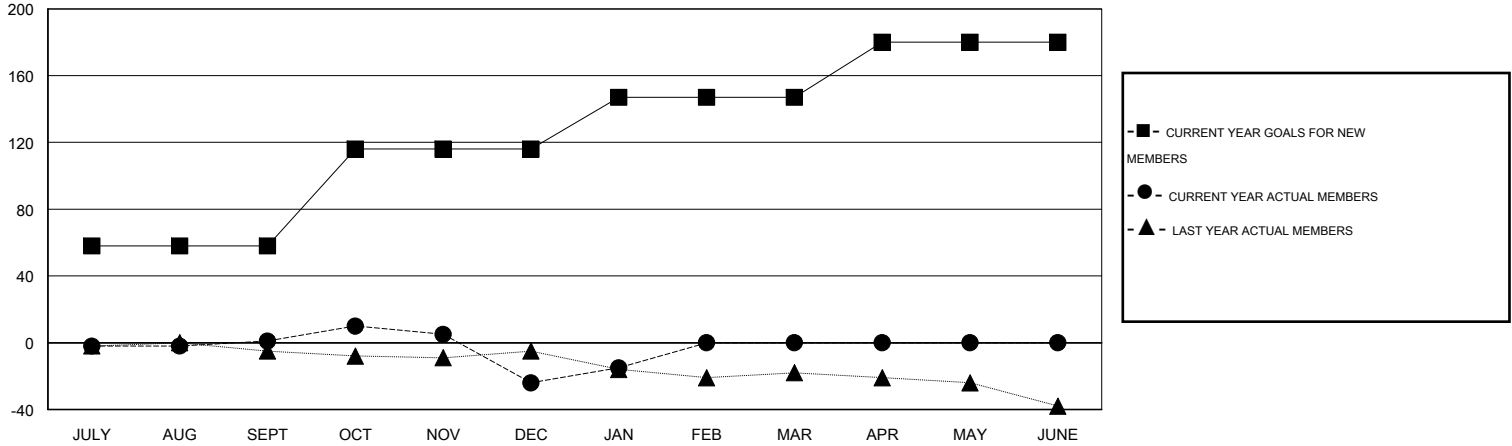
GMT CA 1

Clubs					Members				
RESULTS FOR 2014-2015					RESULTS FOR 2014-2015				
QUARTER	NEW CLUB GOAL	NEW CLUBS	DROPPED CLUBS	NET GAIN/LOSS	QUARTER	NEW MEMBER GOAL	CHARTER AND NEW MEMBERS ADDED	DROPPED MEMBERS	NET GAIN/LOSS
JULY/AUG/SEPT	1	1	2	-1	JULY/AUG/SEPT	58	46	45	1
OCT/NOV/DEC	1	0	1	-1	OCT/NOV/DEC	58	43	68	-25
JAN/FEB/MAR	1	1	0	1	JAN/FEB/MAR	31	26	17	9
APR/MAY/JUNE	1	0	0	0	APR/MAY/JUNE	33	0	0	0

GOALS AND ACTUAL NEW CLUBS CUMULATIVE



GOALS AND ACTUAL MEMBERS CUMULATIVE



DROPPED CLUBS: 3	26 CLUBS OF 57 ADDED 1 OR MORE NEW MEMBERS	<u>GENDER DISTRIBUTION</u>	
<u>DROPPED MEMBERS</u>		MALE	971 (74.69%)
DECEASED	<a href="#">CLICK HERE FOR HEALTH ASSESSMENT DATA</a>	FEMALE	329 (25.31%)
CLUB CANCELLED		FAMILY UNIT MEMBERS	112
OTHER		HEAD OF HOUSEHOLD	55
TOTAL		NON-HEAD OF HOUSEHOLD	57